



## Concelo Top-mount Bracket Kit 153974

### What is the maximum door size for a Concelo bin when top mounted?

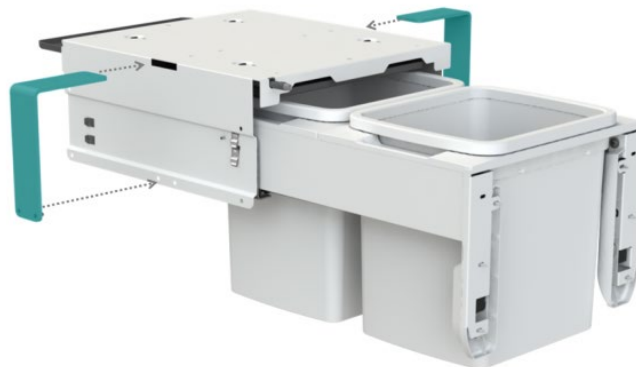
When Concelo is mounted to the top plate in an over-width cabinet using CRTMB Top Mount Brackets, the total door width should not exceed 100mm greater than the standard cabinet width for that bin model, as noted in the table below:

Model	Max door width when top mounted
CR350 Models	450mm
CR400 Models	500mm
CR450 Models	550mm

Please note that bin units that are mounted to the top plate only in an over width cabinet do have more side to side movement than a bin unit that is side mounted in a standard cabinet.

### How do I install Concelo in an over-width cabinet?

Concelo has been engineered to give design flexibility when needed. Concelo can be installed in over width cabinets by mounting to the top of the cabinet using the NEW CRTMB Top Mount Brackets.



This gives designers the freedom to place the bin in the ideal position without compromising strength or rigidity, and no need for packers. This is particularly useful for retrofit situations.

